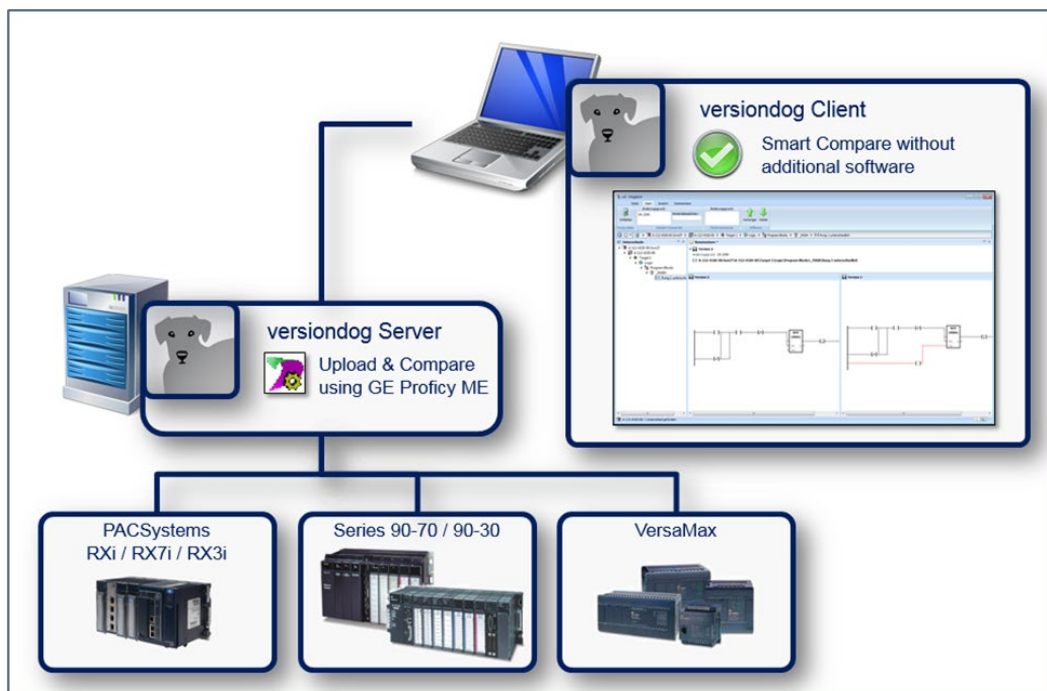


Factsheet

Proficiency Machine Edition from GE



Proficy Machine Edition from GE

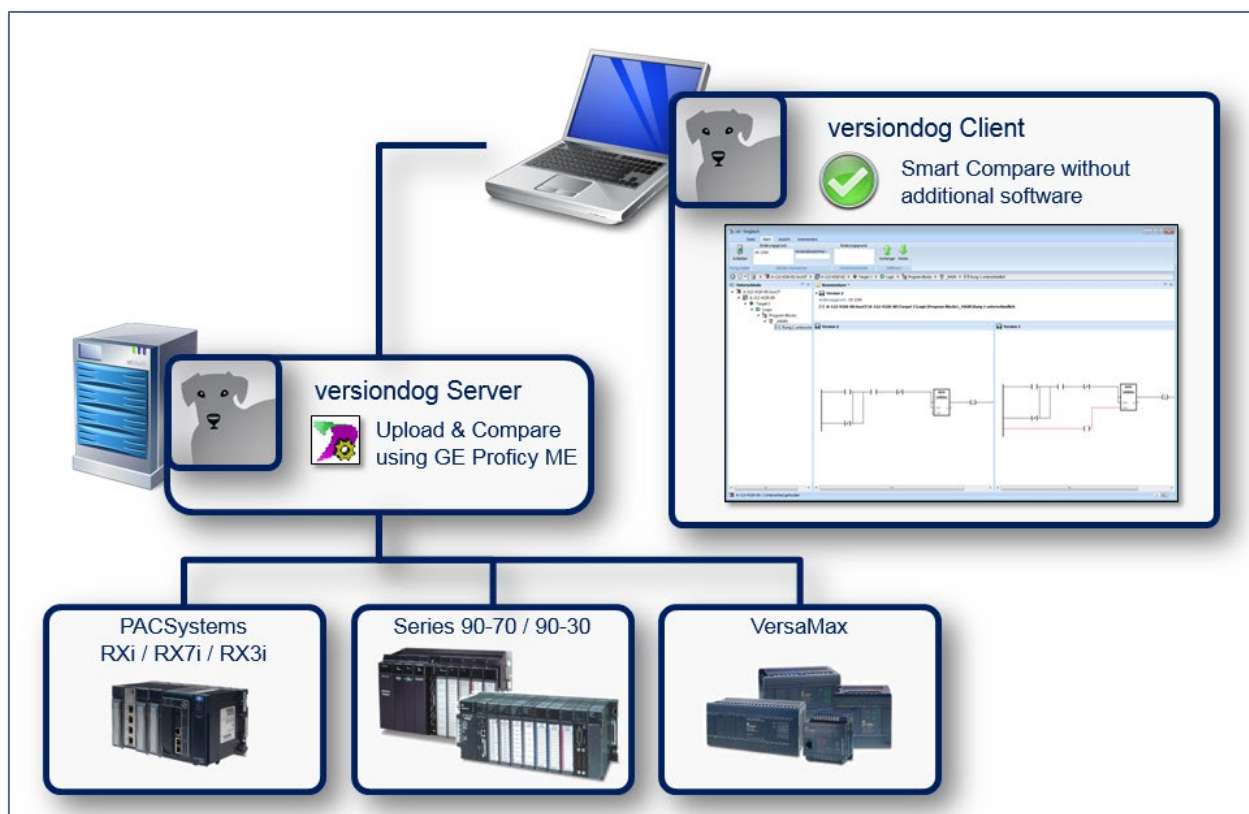
versiondog – For more Efficient Production

versiondog is the leading version control and data management software solution for automated production. It makes tracking changes and safeguarding data significantly more efficient.

versiondog brings order and clarity where project data needs to be continually changed and made available from a central source. The increased safety, security, and certainty provided by this software system quickly results in measurably increased productivity. versiondog makes it easy for you to optimize the interplay between all your different types of robots, controllers, field devices, drives, programming languages, file formats, and software applications.

This data management system gives you ultimate data traceability, minimizing your risks and costs, and saving you time and effort.

Support for Proficy Machine Edition Projects



Proficy Machine Edition from GE

Integration

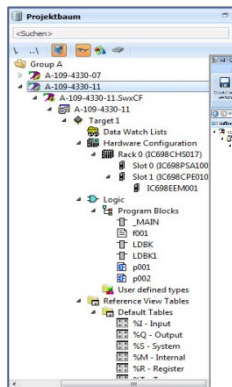


Fig. 1

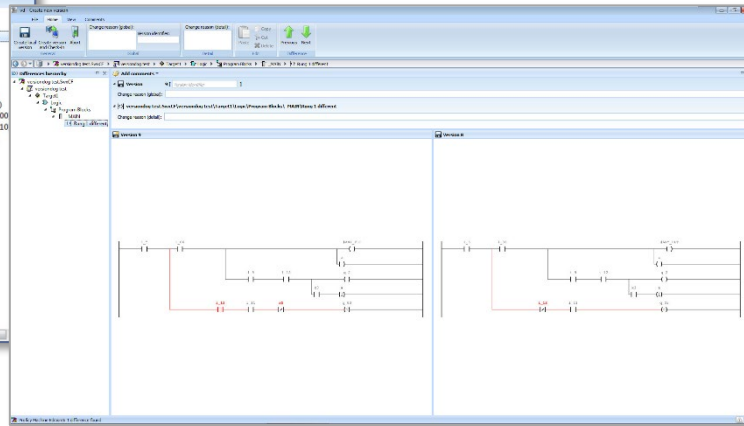


Fig. 2

Fig. 1: GE Proficy project tree in versiondog

Fig. 2: Detailed graphical comparison of a rung

Features and Functions

Detect differences between the backup and the version. Detect differences between a backup and the previous backup.	✓
Clear display of complete change history	✓
Detailed graphical comparison for configuration and firmware	✓
Automatic backup for disaster recovery	✓
Supported devices: <ul style="list-style-type: none"> - PACSystems RXi - PACSystems RX7i - PACSystems RX3i - Series 90-70 - Series 90-30 - VersaMax 	✓
GE iFIX integration available	✓
Custom component type for GE Proficy Machine Edition	✓
Tutorial available in versiondog INFO	✓

System Requirements

For current system requirements, please visit versiondog INFO at www.versiondog.info/en or contact us at info@auvesy.com.

More Information

AUVESY Inc

Tel. +1.616.888.3770

Email info@auvesy.com

Web www.auvesy.us