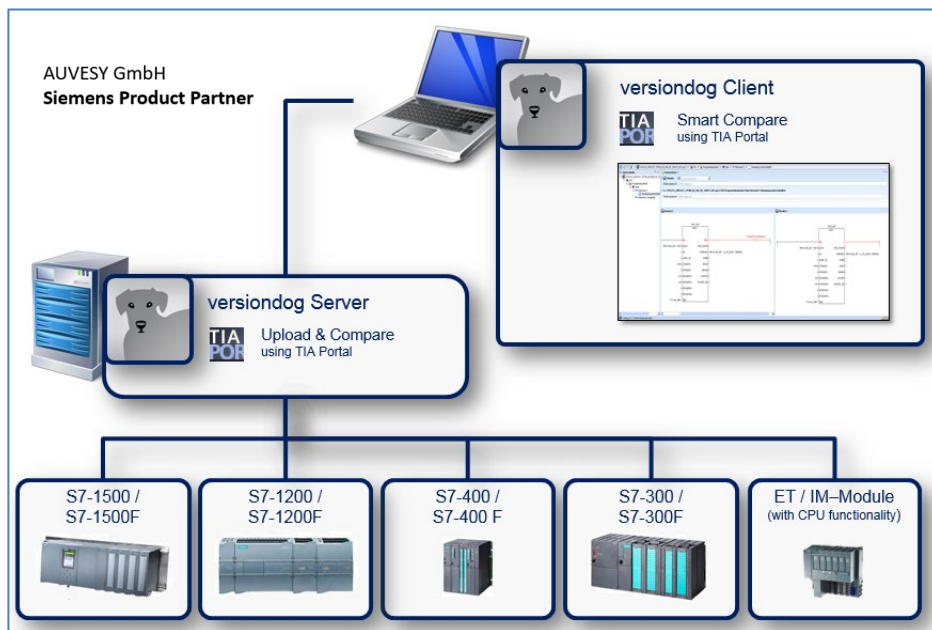


## Factsheet

# TIA Portal with STEP 7 from Siemens



## TIA Portal with STEP 7 from Siemens

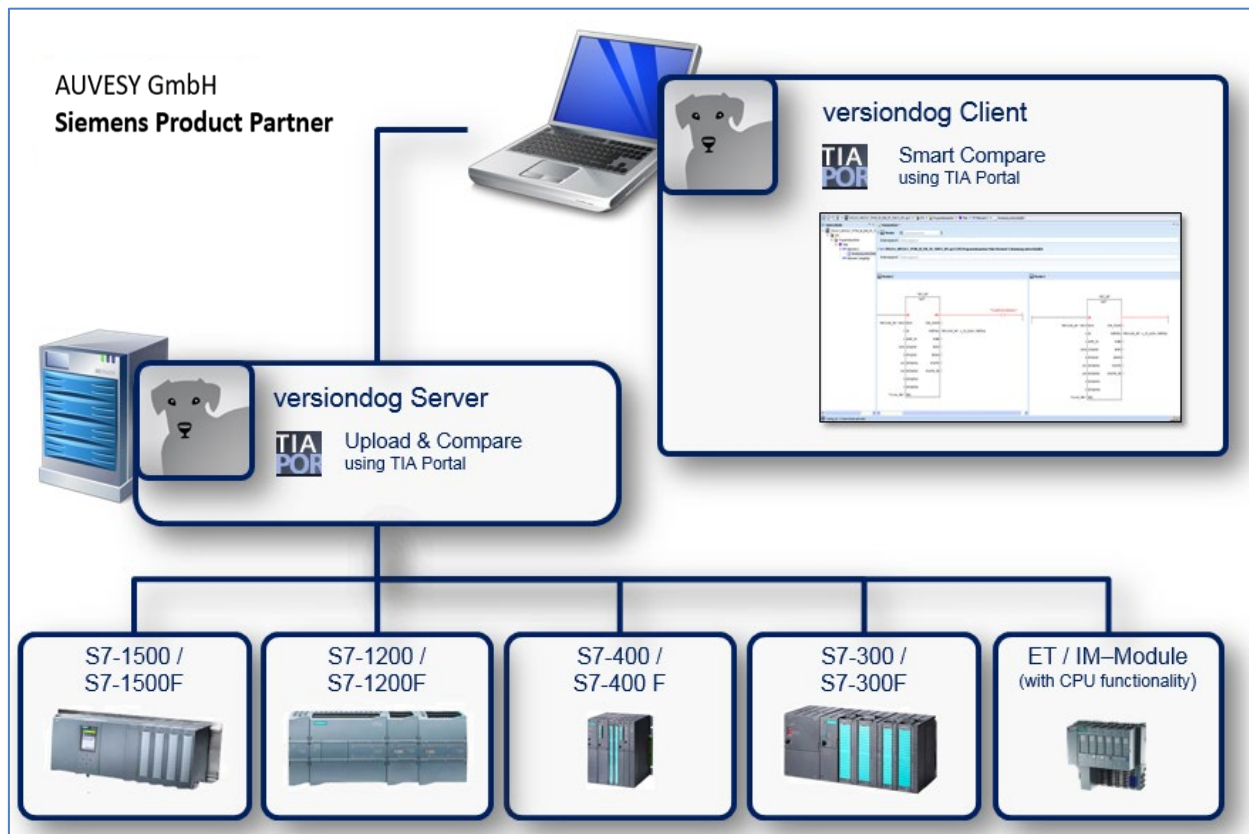
### versiondog – for more Efficient Production

versiondog is the leading version control and data management software solution for automated production. It makes tracking changes and safeguarding data significantly more efficient.

versiondog brings order and clarity where project data needs to be continually changed and made available from a central source. The increased safety, security, and certainty provided by this software system quickly results in measurably increased productivity. versiondog makes it easy for you to optimize the interplay between all your different types of robots, controllers, field devices, drives, programming languages, file formats, and software applications.

This data management system gives you ultimate data traceability, minimizing your risks and costs, and saving you time and effort.

### Support for TIA projects with STEP 7



## TIA Portal with STEP 7 from Siemens

### Integration

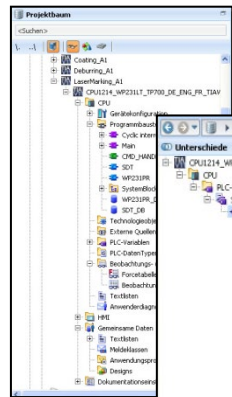
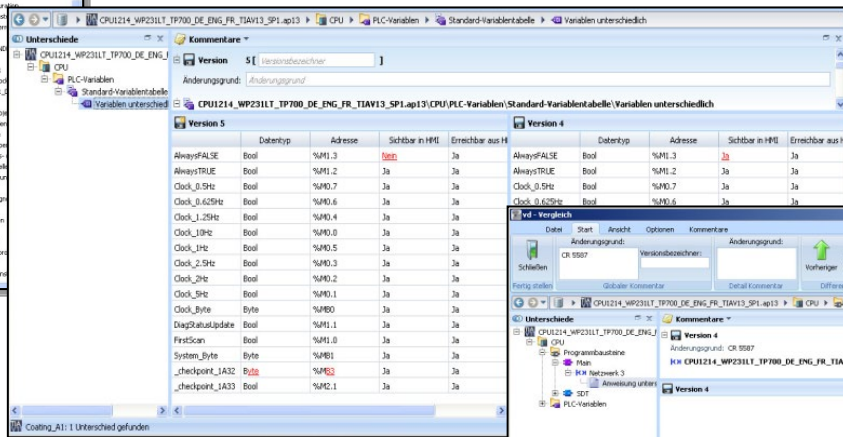


Fig. 1



Version 5	Datentyp	Adresse	Sichtbar in HMI	Erreichbar aus HMI	Version 4	Datentyp	Adresse	Sichtbar in HMI	Erreichbar aus HMI
AlwaysFALSE	Bool	%M1.3	Ja	Ja	AlwaysFALSE	Bool	%M1.3	Ja	Ja
AlwaysTRUE	Bool	%M1.2	Ja	Ja	AlwaysTRUE	Bool	%M1.2	Ja	Ja
Clock_0.5Hz	Bool	%M0.7	Ja	Ja	Clock_0.5Hz	Bool	%M0.7	Ja	Ja
Clock_0.625Hz	Bool	%M0.6	Ja	Ja	Clock_0.625Hz	Bool	%M0.6	Ja	Ja
Clock_1.25Hz	Bool	%M0.4	Ja	Ja	Clock_1.25Hz	Bool	%M0.4	Ja	Ja
Clock_1.3Hz	Bool	%M0.0	Ja	Ja	Clock_1.3Hz	Bool	%M0.0	Ja	Ja
Clock_1Hz	Bool	%M0.5	Ja	Ja	Clock_1Hz	Bool	%M0.5	Ja	Ja
Clock_2.5Hz	Bool	%M0.3	Ja	Ja	Clock_2.5Hz	Bool	%M0.3	Ja	Ja
Clock_3Hz	Bool	%M0.2	Ja	Ja	Clock_3Hz	Bool	%M0.2	Ja	Ja
Clock_5Hz	Bool	%M0.1	Ja	Ja	Clock_5Hz	Bool	%M0.1	Ja	Ja
Clock_Byte	Byte	%MD0	Ja	Ja	Clock_Byte	Byte	%MD0	Ja	Ja
DiagStatusUpdate	Bool	%M1.1	Ja	Ja	DiagStatusUpdate	Bool	%M1.1	Ja	Ja
FirstScan	Bool	%M1.0	Ja	Ja	FirstScan	Bool	%M1.0	Ja	Ja
System_Byte	Byte	%MB1	Ja	Ja	System_Byte	Byte	%MB1	Ja	Ja
_checkpoint_1A32	Byte	%ME3	Ja	Ja	_checkpoint_1A32	Byte	%ME3	Ja	Ja
_checkpoint_1A33	Bool	%MD.1	Ja	Ja	_checkpoint_1A33	Bool	%MD.1	Ja	Ja

Fig. 2

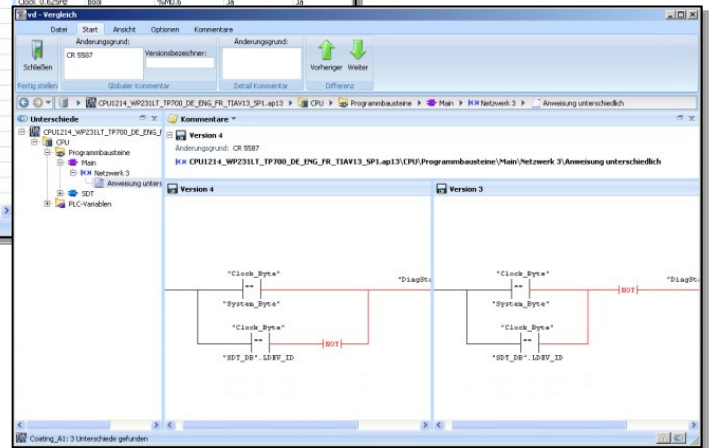


Fig. 3

Fig. 1: TIA STEP 7 project (with HMI project) in the versiondog project tree

Fig. 2: Detailed comparison table of PLC variables

Fig. 3: Detailed graphical comparison for a network

## Features and Functions

AUVESY is a Siemens Product Partner for SINUMERIK systems	✓
Integrated TIA project tree (with HMI)	✓
Detect differences between the backup and the version. Detect differences between a backup and the previous backup.	✓
Clear presentation of complete change history	✓
Detailed graphical comparison	✓
Automated backup for disaster recovery	✓
Integrated support for HMI configuration with detailed comparisons (offline/offline comparison)	✓
Supported controllers: <ul style="list-style-type: none"> <li>- S7-1500 – S7-1500F</li> <li>- S7-1200 – S7-1200F</li> <li>- S7-400 - S7-400F</li> <li>- S7-300 - S7-300F</li> <li>- ET / IM modules with CPU functionality</li> </ul>	✓
Custom component type for TIA projects	✓
Tutorial available in versiondog INFO	✓

### System Requirements

For current system requirements, please visit versiondog INFO at [www.versiondog.info/en](http://www.versiondog.info/en) or contact us at [info@auvesy.com](mailto:info@auvesy.com).

### More Information

#### AUVESY Inc

Tel. +1.616.888.3770

Email [info@auvesy.com](mailto:info@auvesy.com)

Web [www.auvesy.us](http://www.auvesy.us)