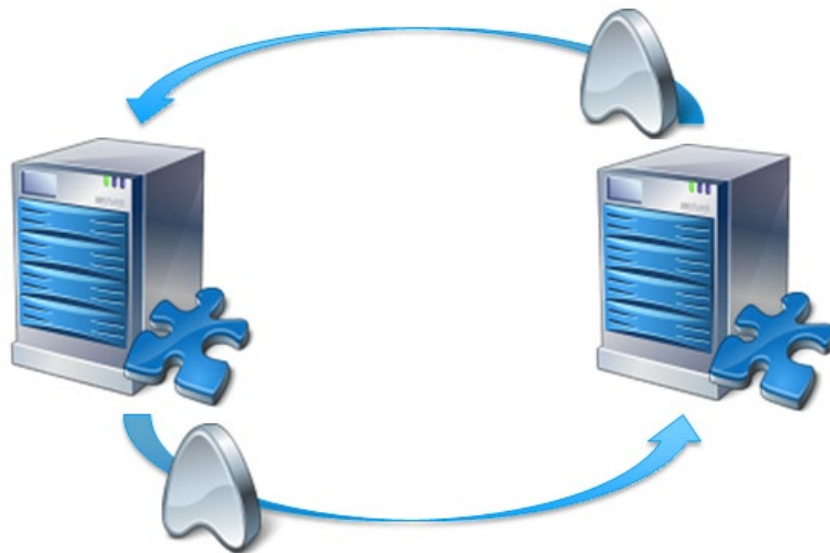


Factsheet

versiondog Component Upload



versiondog Component Upload

versiondog – For more Efficient Production

versiondog is the leading version control and data management software solution for automated production. It makes tracking changes and safeguarding data significantly more efficient.

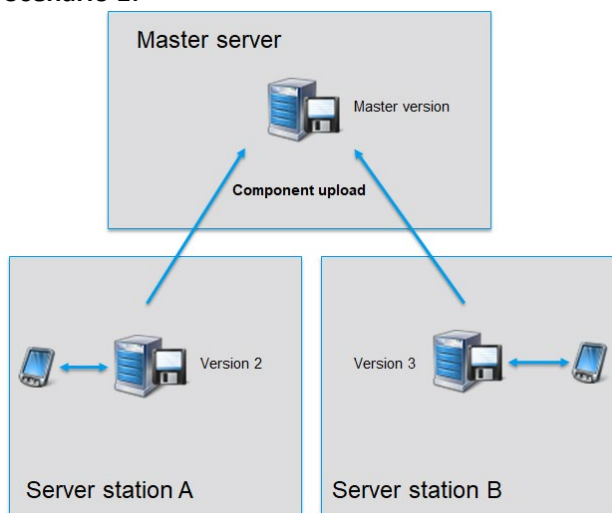
versiondog brings order and clarity where project data needs to be continually changed and made available from a central source. The increased safety, security, and certainty provided by this software system quickly results in measurably increased productivity. versiondog makes it easy for you to optimize the interplay between all your different types of robots, controllers, field devices, drives, programming languages, file formats, and software applications.

This data management system gives you ultimate data traceability, minimizing your risks and costs, and saving you time and effort.

Upload and Compare Components Located on Different Servers

The versiondog component upload function allows you to compare components that are located on different servers without having to synchronize all the data of the entire server. This provides several straight-forward solutions for working in environments in which different server systems are used, as can be seen in the following scenarios listed below:

Scenario 1:

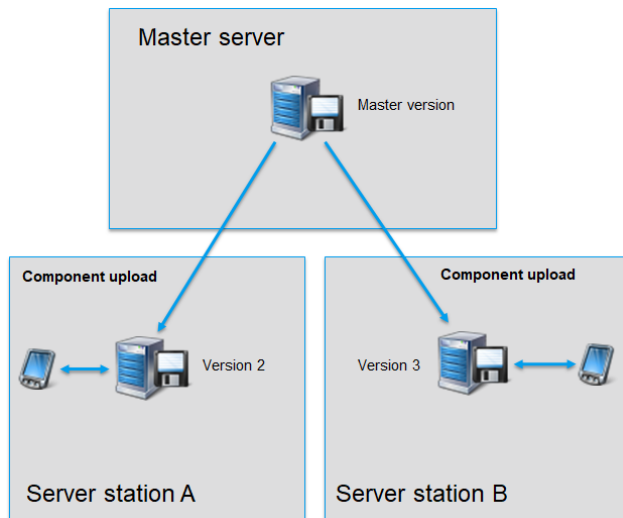


The versions of a component (located on a single server) are uploaded to the master server and compared with the master version. The component upload takes place on the master server.

This option can be used to confirm that the versions of a component at both locations are the latest. Moreover, it is possible to use the component as a control point when carrying out updates. This enables for appropriate measures to be undertaken in a timely manner.

versiondog Component Upload

Scenario 2:



The component versions at the location are copied from the master server and then compared with the latest version on the server. The component upload takes place on different servers at their locations.

By doing this, it is possible to determine if the version being used at both locations is the same as the latest approved version. This can be carried out cyclically in order to detect when a new version of the program block has been authorized by development.

Integration

▼ Network (Archive.zip) settings

vdServerArchive:

User:

Password:

User defined directory

Component directory:

Fig. 1: Job configuration as it appears on the server on which the component upload takes place

Features and Functions

Custom upload type for versiondog component uploads	✓
Detection of differences between components located on different systems	✓
Clear presentation of complete change history	✓
Tutorial available in versiondog INFO	✓

System Requirements

For current system requirements, please visit versiondog INFO at www.versiondog.info/en or contact us at info@auvesy.com.

More Information

AUVESY Inc

Tel. +1.616.888.3770

Email info@auvesy.com

Web www.auvesy.us