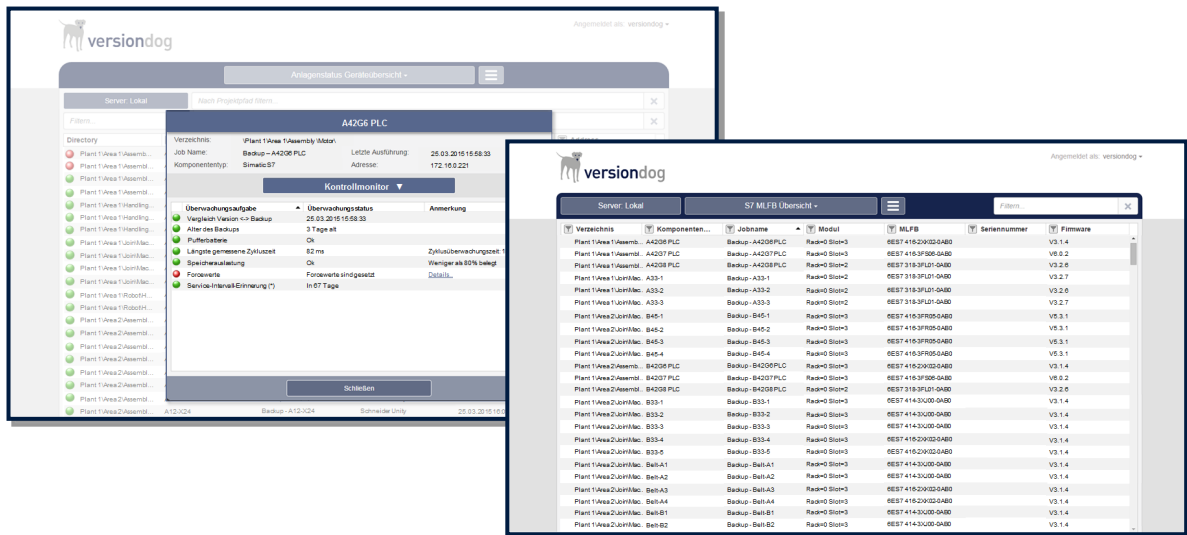


## Factsheet

# versiondog Factory Floor Status



**Kontrollmonitor - A42G6 PLC**

Verzeichnis: Plant 1 Area 1 Assembly Motor  
 Job Name: Backup - A42G6 PLC  
 Komponententyp: Simatic 3?  
 Letzte Ausführung: 26.03.2016 16:56:33  
 Adresse: 172.16.0.224

Überwachungsaufgabe	Überwachungstatus	Anmerkung
Wegschalt-Vorwarn-Backup	25.02.2016 16:59:39	
Alter des Backups	3 Tage alt	
Pufferstrome	OK	
Längstgenommene Zykluszeit	82 ms	Zyklusabweichung 0%
Speicherwartung	OK	Waniger als 80% belegt
Forcwerte	Forcwerte sind gesetzt	Detaill...
Service-Intervall-Ermittlung (*)	In 67 Tage	

**Server: Lokal - S7 MLFB Übersicht**

Verzeichnis	Komponenten...	Jobname	Modul	MLFB	Seriennummer	Firmware
Plant 1 Area 1 Assemb.	A4208 PLC	Backup - A4208 PLC	Rack0 Slot3	6ES7 416-2G02-0AB0		V3.1.4
Plant 1 Area 1 Assemb.	A4207 PLC	Backup - A4207 PLC	Rack0 Slot3	6ES7 416-3F00-0AB0		V6.0.2
Plant 1 Area 1 Assemb.	A4208 PLC	Backup - A4208 PLC	Rack0 Slot2	6ES7 318-3F01-0AB0		V3.2.0
Plant 1 Area 1 LichtMac.	A33-1	Backup - A33-1	Rack0 Slot2	6ES7 318-3F01-0AB0		V3.2.7
Plant 1 Area 1 LichtMac.	A33-2	Backup - A33-2	Rack0 Slot2	6ES7 318-3F01-0AB0		V3.2.0
Plant 1 Area 1 LichtMac.	A33-3	Backup - A33-3	Rack0 Slot2	6ES7 318-3F01-0AB0		V3.2.7
Plant 1 Area 2 LichtMac.	B45-1	Backup - B45-1	Rack0 Slot3	6ES7 416-3F00-0AB0		V5.0.1
Plant 1 Area 2 LichtMac.	B45-2	Backup - B45-2	Rack0 Slot3	6ES7 416-3F00-0AB0		V5.3.1
Plant 1 Area 2 LichtMac.	B45-3	Backup - B45-3	Rack0 Slot3	6ES7 416-3F00-0AB0		V5.3.1
Plant 1 Area 2 LichtMac.	B45-4	Backup - B45-4	Rack0 Slot3	6ES7 416-3F00-0AB0		V5.3.1
Plant 1 Area 2 LichtMac.	B4208 PLC	Backup - B4208 PLC	Rack0 Slot3	6ES7 416-2G02-0AB0		V3.1.4
Plant 1 Area 2 LichtMac.	B4207 PLC	Backup - B4207 PLC	Rack0 Slot3	6ES7 416-3F00-0AB0		V6.0.2
Plant 1 Area 2 LichtMac.	B4208 PLC	Backup - B4208 PLC	Rack0 Slot2	6ES7 318-3F01-0AB0		V3.2.0
Plant 1 Area 2 LichtMac.	B33-1	Backup - B33-1	Rack0 Slot3	6ES7 414-3U00-0AB0		V3.1.4
Plant 1 Area 2 LichtMac.	B33-2	Backup - B33-2	Rack0 Slot3	6ES7 414-3U00-0AB0		V3.1.4
Plant 1 Area 2 LichtMac.	B33-3	Backup - B33-3	Rack0 Slot3	6ES7 414-3U00-0AB0		V3.1.4
Plant 1 Area 2 LichtMac.	B33-4	Backup - B33-4	Rack0 Slot3	6ES7 416-2G02-0AB0		V3.1.4
Plant 1 Area 2 LichtMac.	B33-5	Backup - B33-5	Rack0 Slot3	6ES7 416-2G02-0AB0		V3.1.4
Plant 1 Area 2 LichtMac.	B40A1	Backup - B40A1	Rack0 Slot3	6ES7 414-3U00-0AB0		V3.1.4
Plant 1 Area 2 LichtMac.	B40A2	Backup - B40A2	Rack0 Slot3	6ES7 414-3U00-0AB0		V3.1.4
Plant 1 Area 2 LichtMac.	B40A3	Backup - B40A3	Rack0 Slot3	6ES7 416-2G02-0AB0		V3.1.4
Plant 1 Area 2 LichtMac.	B40A4	Backup - B40A4	Rack0 Slot3	6ES7 416-2G02-0AB0		V3.1.4
Plant 1 Area 2 LichtMac.	B40B1	Backup - B40B1	Rack0 Slot3	6ES7 414-3U00-0AB0		V3.1.4
Plant 1 Area 2 LichtMac.	B40B2	Backup - B40B2	Rack0 Slot3	6ES7 414-3U00-0AB0		V3.1.4

## versiondog Factory Floor Status

---

### **versiondog - For more Efficient Production**

versiondog is the leading version control and data management software solution for automated production. It makes tracking changes and safeguarding data significantly more efficient.

versiondog brings order and clarity where project data needs to be continually changed and made available from a central source. The increased safety, security, and certainty provided by this software system quickly results in measurably increased productivity. versiondog makes it easy for you to optimize the interplay between all your different types of robots, controllers, field devices, drives, programming languages, file formats, and software applications.

This data management system gives you ultimate data traceability, minimizing your risks and costs, and saving you time and effort.

### **versiondog Factory Floor Status**

Factory Floor Status is a web-based versiondog add-on. It displays a table overview of all networked devices, non-networked devices, and equipment that is integrated in the versiondog system. The add-on allows you to monitor each device according to several criteria.

versiondog Factory Floor Status is an invaluable aid for predictive maintenance and in ensuring sustained high production quality in automated facilities. It displays the current status of automatic backup and compare jobs and the results of comparison with the latest version of the project on the versiondog system. Additional device-specific information is also monitored and displayed so that the precise status of each device is always readily available and can be clearly seen.

The versiondog Factory Floor Status add-on was released in versiondog 4.0 and displays two kinds of reports:

- Factory Floor Status – Device Overview
- Factory Floor Status – S7 MLFB Overview

Whether you need to monitor RAM usage, forced values, or see what firmware is installed on which PLC control panels, Factory Floor Status shows you everything at a glance from wherever you are on the network.

From versiondog 5.0 and later, an overview of the SEW firmware is also included, as are device specific forced value monitors for RSLogix 5000, Schneider Electric Unity, and GE iFix.

## versiondog Factory Floor Status

### Device Information

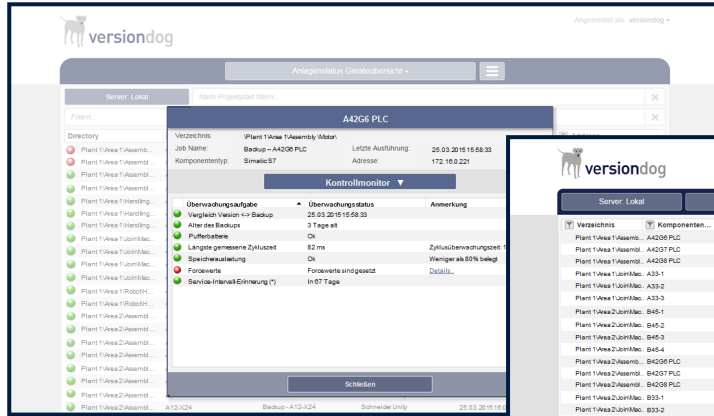


Fig. 1: Status information on demand

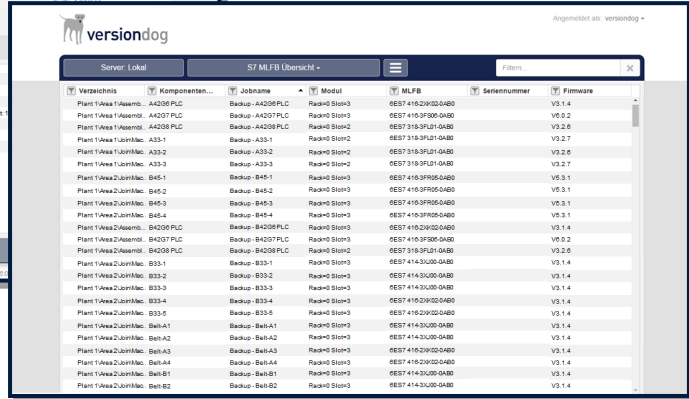


Fig. 2: The S7 MLFB Overview shows where each MLFB is located and what firmware is installed

## Features and Functions

List of all devices and equipment integrated in the versiondog system	✓
General monitoring: <ul style="list-style-type: none"> <li>- Comparison results of the most recently executed job</li> <li>- Warning if a backup is not made within a user-specified time period</li> </ul>	✓
S7 monitors (for S7-300, S7-400) <ul style="list-style-type: none"> <li>- MLFB overview incl. installed firmware</li> <li>- Forced values monitor</li> <li>- Cycle time monitor</li> <li>- RAM usage monitor</li> <li>- Battery status monitor (availability of this monitor depends on the specific hardware used)</li> </ul>	✓
Forced value monitoring for controllers <ul style="list-style-type: none"> <li>- RsLogix5000</li> <li>- Schneider Unity</li> <li>- GE Proficy ME</li> </ul>	✓
Overview of SEW firmware	✓
All reports can be downloaded/exported as CSV files	✓
Web client with SSL encryption <ul style="list-style-type: none"> <li>- This product includes software developed by the OpenSSL Project for use in the OpenSSL Toolkit. (<a href="http://www.openssl.org/">http://www.openssl.org/</a>)</li> <li>- This product includes cryptographic software written by Eric Young. (<a href="http://cryptsoft.com">http://cryptsoft.com</a>)</li> </ul>	✓
Installation of the versiondog web server with a single click	✓
Tutorial available in versiondog INFO	✓

## versiondog Factory Floor Status

---

### System Requirements

For current system requirements, please visit versiondog INFO at [www.versiondog.info/en](http://www.versiondog.info/en) or contact us at [info@auvesy.com](mailto:info@auvesy.com).

### More Information

**AUVESY Inc**

Tel. +1.616.888.3770

Email [info@auvesy.com](mailto:info@auvesy.com)

Web [www.auvesy.us](http://www.auvesy.us)