

# Factsheet

# versiondog GxP Edition





### VERSIONDOG – FOR MORE EFFICIENT PRODUCTION

versiondog is the leading version control and data management software solution for automated production. The software safeguards, backs up, stores, manages and versions project data, device data and process data from programmable industrial devices (PLCs, CNCs, SCADA systems, HMIs and drives) and documents. This allows users to identify and track all (program) changes.

The versiondog system provides the complete package of change management, version control and data backup and ensures high plant availability, minimized downtime, and enables fast disaster recovery.

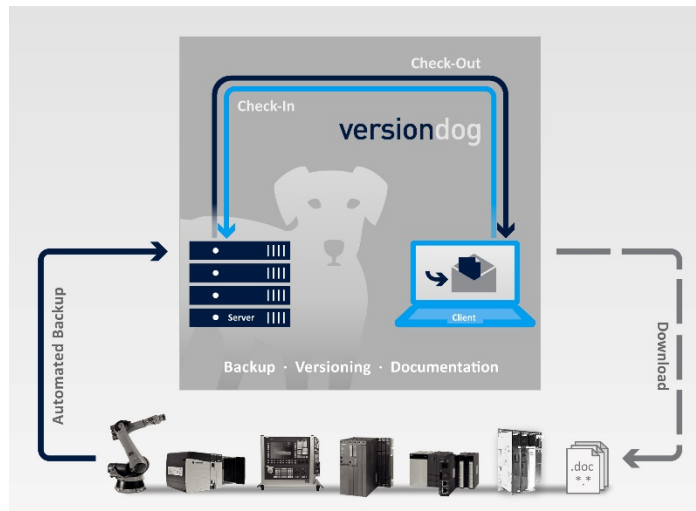
### FUNCTIONALITIES:

#### Automatic Backup

Schedule automatic back-ups.  
Regular automatic online /offline comparisons of versions.

#### More Certainty, Safety, and Security

Simplify coordination and management of external contractors. Track changes to all control programs and data in use in production and quickly see WHO changed WHAT, WHEN, WHERE, and WHY.



#### Version Control

Standardized management of all changes to control programs. Changes displayed clearly and comprehensibly. Quickly find and restore a previous version. Speed up disaster recovery.

### VERSIONDOG – YOUR BENEFITS:

#### Reduce costs:

- ✓ **Reduce downtime** by quickly restoring an error-free version (disaster recovery)
- ✓ **Improve efficiency** when commissioning new production lines
- ✓ **Simplify day-to-day work processes:** data backup, documentation, and error detection
- ✓ **Reduce effort involved in audits by 30% or more**

#### Improve quality:

- ✓ **See at a glance:** WHO changed WHAT, WHEN, WHERE, and WHY
- ✓ **Analyze projects** – e.g. find points of frequent change
- ✓ **Access documentation** for audit trails and QM processes
- ✓ **Simplify** coordination and management of external contractors
- ✓ **Custom interface for SAP**

#### More certainty, safety and security:

- ✓ **Detect** unauthorized changes to running control programs
- ✓ **Quickly find the right data** needed for disaster recovery
- ✓ **Quickly replace** corrupted programs
- ✓ **Central data management** within a complex infrastructure
- ✓ **Automatic backup of PCs**, e.g. batch server, asset mgt. systems, etc.

### EXTENDED FUNCTIONS FOR GxP CUSTOMERS

- ✓ Additional authentication before versioning
- ✓ Additional authentication before Check-In
- ✓ Two-factor authentication
- ✓ Admin reporting included (AdminLog add-on)

### DOCUMENTATION FOR GxP CUSTOMERS

- ✓ Global User Requirement documentation (incl. screenshots of test steps taken at AUVESY)
- ✓ Compliance response for versiondog (undertaken in accordance with the requirements specified in 21 CFR Part 11 and Annex 11 of the EU GMP Guidelines)
- ✓ Classification of versiondog according to GAMP 5 criteria

### SERVICES FOR GxP CUSTOMERS

Additional support for validation of versiondog available upon request:

- ✓ Basic documentation (URS, FRA, IQ/OQ)
- ✓ Installation and Operational Qualification (IQ/OQ) service

### INCLUDED TECHNICAL EXTENSIONS

- ✓ PCS 7 add-on (not included in the Standard Edition)

### PRODUCTS/SCOPE OF DELIVERY

	versiondog AP Standard Edition	versiondog EP Standard Edition	versiondog AP Standard Edition FDA & GxP	versiondog EP Standard Edition FDA & GxP
<b>Art. No.</b>	<b>400-001-01</b>	400-101-01	<b>400-002-01</b>	400-102-01
<b>Scope of SmartCompares</b>	all available (excl. PCS 7)	all available (excl. PCS 7)	all available (incl. PCS 7)	all available (incl. PCS 7)
<b>Number of users</b>	unlimited	50	unlimited	50
<b>Number of backup jobs</b>	1,000	10	1,000	10
<b>Number of components</b>	3,000	30,000	3,000	30,000
<b>Single package: versiondog Library S7 or RSLogix 5000</b>	optional	✓	optional	✓
<b>versiondog PCS 7 add-on</b>	optional	optional	✓	✓
<b>versiondog AdminLog</b>	optional	optional	✓	✓
<b>Principle/rule of double check</b>	not available	not available	✓	✓
<b>Authentication before versioning</b>	not available	not available	✓	✓
<b>Authentication before Check-In</b>	not available	not available	✓	✓
<b>versiondog test report documentation for GxP requirements</b>	not available	not available	✓	✓
<b>IQ / OQ Services</b>	not available	not available	upon request	upon request

### System Requirements

For current system requirements, please visit versiondog INFO at [www.versiondog.info/en](http://www.versiondog.info/en) or contact us at [info@auvesy.com](mailto:info@auvesy.com).

### More Information

#### AUVESY Inc

Tel. +1.616.888.3770

Email [info@auvesy.com](mailto:info@auvesy.com)

Web [www.auvesy.us](http://www.auvesy.us)