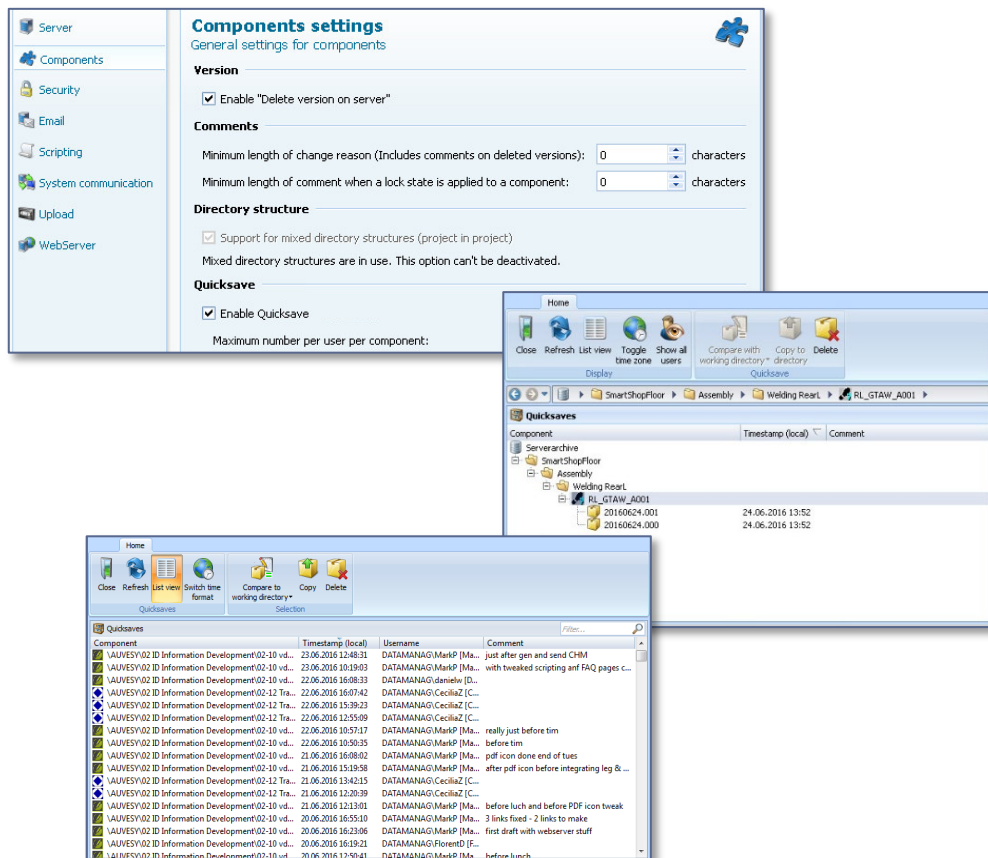


## Factsheet

# versiondog Quicksave



The image displays two screenshots from the versiondog application. The top screenshot shows the 'Components settings' window, which includes sections for 'Version', 'Comments', 'Directory structure', and 'Quicksave'. The 'Quicksave' section is checked and shows a maximum number of 1 per user per component.

The bottom screenshot shows the 'Quicksaves' interface, which displays a list of saved versions. The table below represents the data shown in this interface:

Component	Timestamp (local)	Username	Comment
LAUVESY\02 ID Information Development\02-10 vd...	23.06.2016 12:48:31	DATAMANAG\MarkP [Ma...	just after gen and send CHM
LAUVESY\02 ID Information Development\02-10 vd...	23.06.2016 10:19:03	DATAMANAG\MarkP [Ma...	with tweaked scripting anf FAQ pages c...
LAUVESY\02 ID Information Development\02-10 vd...	22.06.2016 16:08:33	DATAMANAG\denielw [D...	
LAUVESY\02 ID Information Development\02-12 Tra...	22.06.2016 16:07:42	DATAMANAG\CeciliaZ [C...	
LAUVESY\02 ID Information Development\02-12 Tra...	22.06.2016 15:39:23	DATAMANAG\CeciliaZ [C...	
LAUVESY\02 ID Information Development\02-12 Tra...	22.06.2016 12:55:09	DATAMANAG\CeciliaZ [C...	
LAUVESY\02 ID Information Development\02-10 vd...	22.06.2016 10:57:17	DATAMANAG\MarkP [Ma...	really just before tim
LAUVESY\02 ID Information Development\02-10 vd...	22.06.2016 10:36:35	DATAMANAG\MarkP [Ma...	before tim
LAUVESY\02 ID Information Development\02-10 vd...	21.06.2016 16:08:02	DATAMANAG\MarkP [Ma...	pdf icon done end of tues
LAUVESY\02 ID Information Development\02-10 vd...	21.06.2016 15:19:58	DATAMANAG\MarkP [Ma...	after pdf icon before integrating leg & ...
LAUVESY\02 ID Information Development\02-12 Tra...	21.06.2016 13:42:15	DATAMANAG\CeciliaZ [C...	
LAUVESY\02 ID Information Development\02-12 Tra...	21.06.2016 12:20:39	DATAMANAG\CeciliaZ [C...	
LAUVESY\02 ID Information Development\02-10 vd...	21.06.2016 12:13:01	DATAMANAG\MarkP [Ma...	before luch and before PDF icon tweak
LAUVESY\02 ID Information Development\02-10 vd...	20.06.2016 16:55:10	DATAMANAG\MarkP [Ma...	3 links fixed - 2 links to make
LAUVESY\02 ID Information Development\02-10 vd...	20.06.2016 16:23:06	DATAMANAG\MarkP [Ma...	first draft with webserver stuff
LAUVESY\02 ID Information Development\02-10 vd...	20.06.2016 16:19:21	DATAMANAG\FlorentD [F...	
LAUVESY\02 ID Information Development\02-10 vd...	20.06.2016 13:50:41	DATAMANAG\MarkP [Ma...	before lunch

### **versiondog – For more Efficient Production**

versiondog is the leading version control and data management software solution for automated production. It makes tracking changes and safeguarding data significantly more efficient.

versiondog brings order and clarity where project data needs to be continually changed and made available from a central source. The increased safety, security, and certainty provided by this software system quickly results in measurably increased productivity. versiondog makes it easy for you to optimize the interplay between all your different types of robots, controllers, field devices, drives, programming languages, file formats, and software applications.

This data management system gives you ultimate data traceability, minimizing your risks and costs, and saving you time and effort.

### **versiondog Quicksave**

The Quicksave function allows you to use versiondog to make interim backup copies of the working directory of components and temporarily store them on the server without having to create a new version. This feature is aptly named Quicksave because it only requires a couple of clicks.

Making changes to an existing project can sometimes take several days. With Quicksave, you can store an interim version on the versiondog server quickly and easily. This allows you to create backups of the most important project stages. Quicksave therefore provides the following advantages for the user:

- Less data and increased clarity in the version history by removing the need to create new versions of unfinished changes.
- Greater flexibility – interim versions can be passed to other users via the administrator.
- Time savings, as the manual backup of an interim version (selecting, copying, packing, naming and managing) can now be completed at the click of a button.
- Increased clarity, as Quicksaves can be compared with one another or with existing versions at any time.
- Data safekeeping, as Quicksaves are always stored on the versiondog server. This means no more time wasted looking for your most recent save.

## versiondog Quicksave

### Quicksave in versiondog

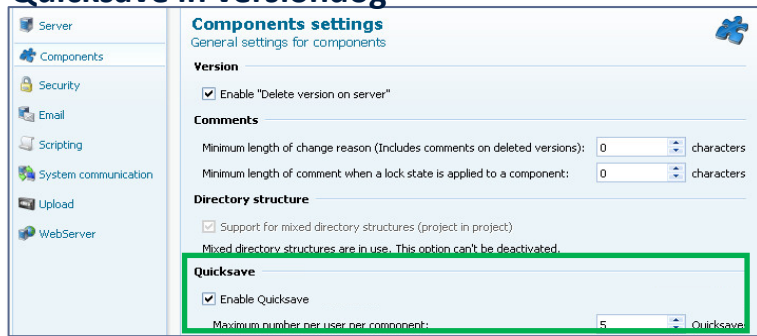


Fig.1



Fig. 2

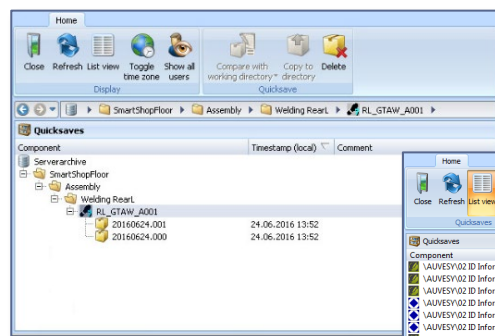


Fig. 3

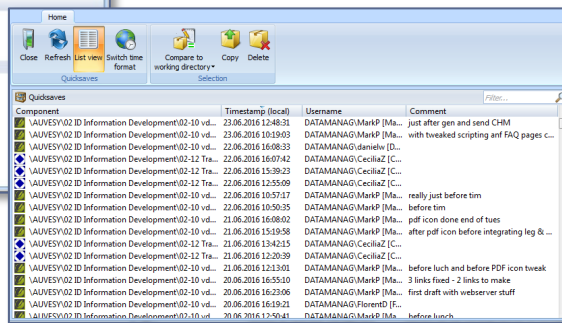


Fig. 4

- Fig. 1: The Quicksave feature can be activated or deactivated in the server settings .
- Fig. 2: The Quicksave buttons appear in the "Extras" tab in the UserClient when the Quicksave option is activated in the server settings.
- Fig. 3: The user can manage their own Quicksaves independently.
- Fig. 4: The administrator can manage all Quicksaves from all users.

## Features and Functions

The Quicksave function is included in the standard setup	✓
Quicksave can be activated or deactivated for the versiondog system	✓
Detail comparison between Quicksaves and versions	✓
Simple and consistent archiving of interim versions on the server	✓
All Quicksaves can be managed by the administrator	✓
Tutorial available in versiondog Info	✓
versiondog release	2.6 and Later

## System Requirements

For current system requirements, please visit versiondog INFO at [www.versiondog.info/en](http://www.versiondog.info/en) or contact us at [info@auvesy.com](mailto:info@auvesy.com).

## More Information

### AUVESY Inc

Tel. +1.616.888.3770

Email [info@auvesy.com](mailto:info@auvesy.com)

Web [www.auvesy.us](http://www.auvesy.us)