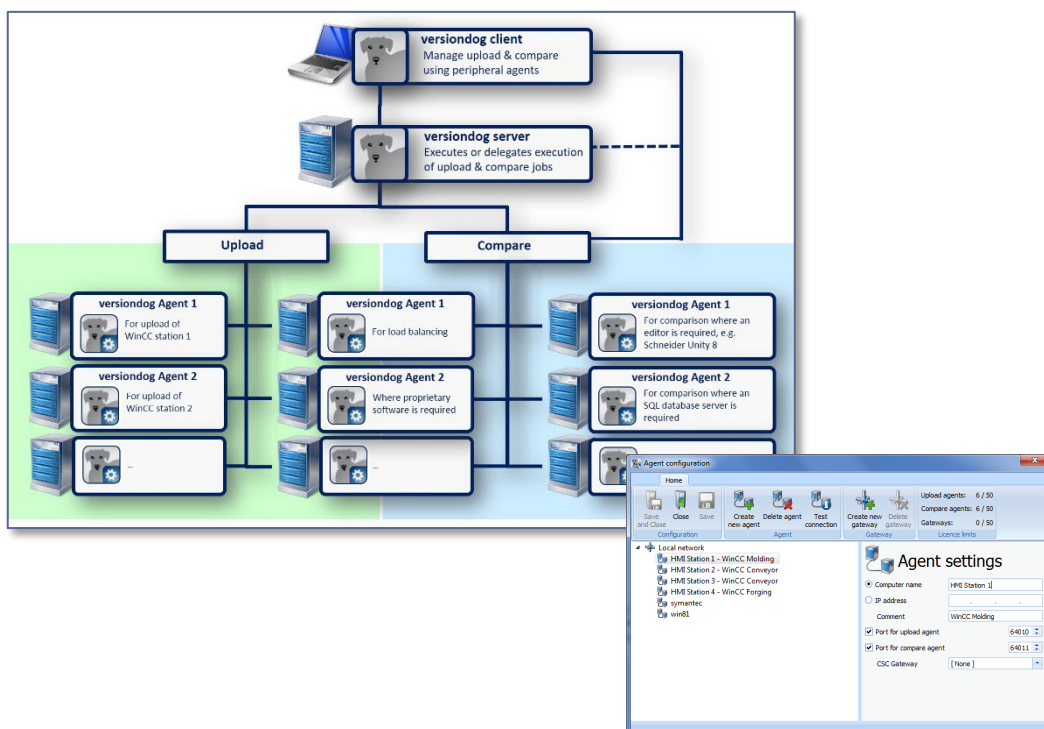


## Factsheet

# versiondog Agents



### When is it Recommended to use versiondog Agents?

For reasons related to performance and compatibility, it is necessary to carry out upload and compares for certain devices using an agent. To do so, proceed as follows:

1. If you want to access and archive the HMI Runtimes during operation, you require agents (one per HMI station).
2. In situations where additional software (e.g. the development environment of a device) is required to archive and/or compare a device, there are circumstances under which we recommend using the versiondog agents. For instance:
  - a. If you cannot install certain software on your versiondog server or client.
  - b. If you use different versions of the software at the same time but cannot install them on the same system (e.g. because it is not possible to install multiple versions of the software on the same system).
  - c. In some situations where there are prerequisites for upload or for compare, e.g. SQL database server, secure environments, firewall rules, etc.
3. Agents enable you to carry out processes on an external system or server. This is especially useful when requisite editor resources are not available on the local client system. This helps reduce license costs that come with the installing an editor on each individual computer.
4. On certain devices, it is only possible to carry out one action (archiving/comparison) at a time due to technical reasons. You can use agents to distribute actions across several systems to increase performance.
5. If you need to access/perform an action on a system, but cannot access this system via the network, you can install an agent on the system directly (this will allow you to access the system's resources).
6. If communication with a BUS system (MPI/PROFIBUS/PROFINET/Modbus/etc.) is not possible for the server (e.g. because the server has no interface card) you can install an agent on the system on which a BUS interface is installed. This will allow versiondog to communicate with the BUS.

## versiondog Agents

### versiondog Scenario with Agents

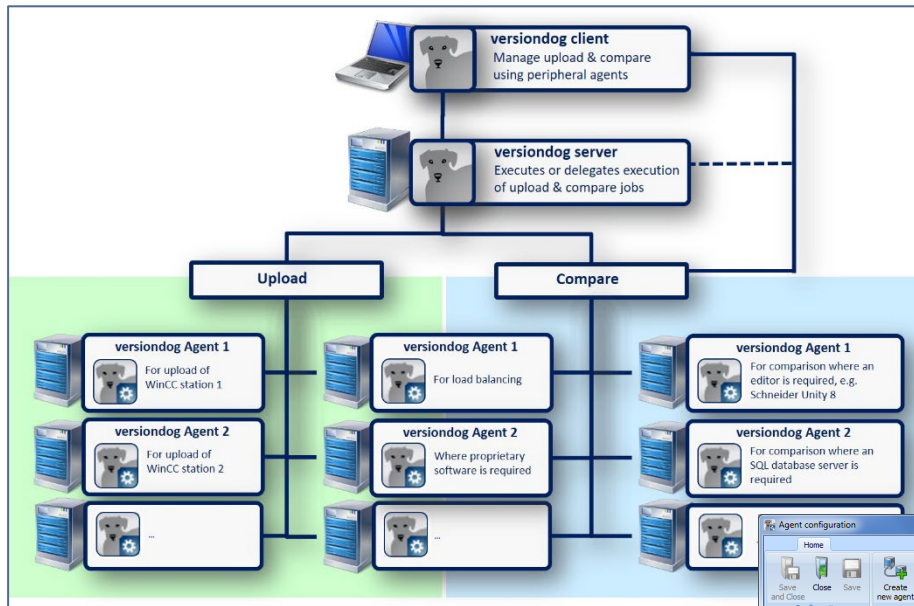


Fig. 1 Administration panel in the versiondog AdminClient

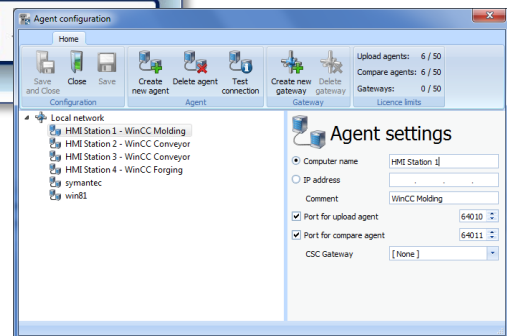


Fig. 2 Administration panel in the versiondog AdminClient

## Features and Functions

Online backup of HMI runtimes during operation.	✓
Decentralised Jobs to improve performance and load balancing	✓
Task distribution and parallel computation strategy	✓
No installation of editors on the versiondog main server necessary	✓
Avoid the need to upgrade and change the hardware of the versiondog main server	✓
Avoid the need to install editors and reconfigure hardware on versiondog client computers	✓ (4.5 and Later)
Automatic SmartUpdate for agents when updating the server	✓
Tutorial available in versiondog INFO	✓

## System Requirements

For current system requirements, please visit versiondog INFO at [www.versiondog.info/en](http://www.versiondog.info/en) or contact us at [info@auvesy.com](mailto:info@auvesy.com).

## More Information

**AUVESY Inc**

Tel. +1.616.888.3770

Email [info@auvesy.com](mailto:info@auvesy.com)

Web [www.auvesy.us](http://www.auvesy.us)